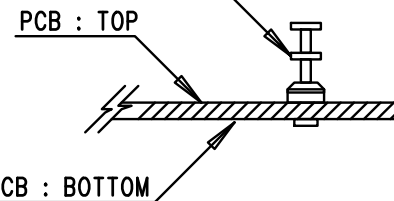


| REVISION HISTORY | | | | |
|------------------|-----|----------------|--------|----------|
| ECO | REV | DESCRIPTION | APPR | DATE |
| - | 1 | PRODUCTION FAB | JIM D. | 05-28-10 |

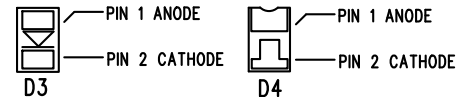
NOTES: UNLESS OTHERWISE SPECIFIED

1. WORKMANSHIP SHALL BE IN ACCORDANCE WITH IPC-A-610.
2. ASSEMBLY PROCESS SHALL INCLUDE: REFLOW SOLDER TOP SIDE SMD.
3. PARTS TO OMIT WILL BE SPECIFIED ON THE BILL OF MATERIALS
LOCATIONS OF OMITTED PARTS SHALL BE FREE OF SOLDER.
MASK THE SOLDER STENCIL WHERE SMT PARTS ARE OMITTED.
4. INSTALL SHUNTS AS SHOWN ON ASSY DRAWING.
5. DEPANELIZE BOARDS AFTER ASSEMBLY AND ROUTE-OUT THE BREAKOUT TABS ON FOUR SIDES OF THE BOARD EDGE.
6. INSTALL TURRETS AS SHOWN BELOW:

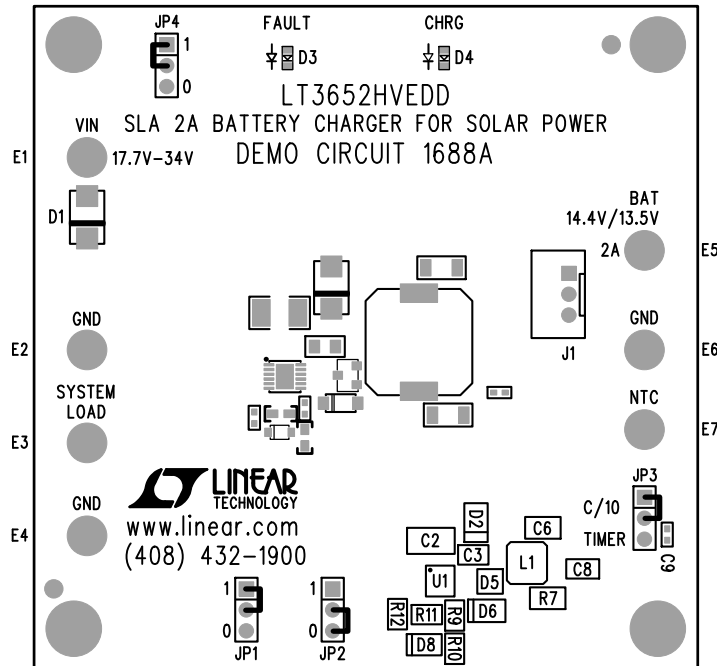
(7 PLCS) : MILL-MAX 2501-2



7. SUPER SMALL LED PART ORIENTATION



BOTTOM VIEW



TOP SILKSCREEN
 LINEAR TECHNOLOGY
 DC1688A-1 * LT3652HVEDD
 SLA 2A BATTERY CHARGER FOR SOLAR POWER
 DATE: 05-28-10

APPROVALS

| | INIT | DATE |
|----------|--------|----------|
| PCB DES. | NC | 05-28-10 |
| APP ENG. | JIM D. | 05-28-10 |
| | | |
| | | |
| | | |
| | | |

SCALE = NONE

LINEAR TECHNOLOGY
 1630 MCCARTHY BLVD
 MILPITAS, CA 95035
 PH: (408)432-1900
 www.linear.com
 LTC CONFIDENTIAL-
 FOR CUSTOMER USE ONLY

TITLE: TOP ASSEMBLY DRAWING
 SLA 2A BATTERY CHARGER FOR SOLAR POWER

| | | |
|-------------|--|-----------|
| SIZE N/A | IC NO. LT3652HVEDD DEMO CIRCUIT 1688A | REV. 1 |
|-------------|--|-----------|

FILENAME: DC1688A-1.PCB SHT 1 of 2